

Powergate³ Decoder

Instruction manual and user's guide

This manual explains features and provides basic information about how to set up and operate the Powergate³ Decoder, including instructions on how to download Alientech Slave Manager software and configure User tools. The manual also includes warnings and precautions for the safe and proper use of the product.

Warning

Important Notices regarding the use of Powergate³

Warning: by using this Product you give your acceptance to the terms of license and warranty contained in the section Product Warranty and Software License.

To avoid electrical shock, do not open the case when the tool is connected. Refer any required servicing of product to Alientech Srl only.

The product and its accessories are for professional use only.

Important Notices regarding the contents of this guide

- Alientech Srl owns and administers some or all the rights to the images and other copyrighted content in this manual. Use of the images and other copyrighted content (including copying, reproducing, modifying, uploading on a network, displaying, transmitting, distributing, licensing, selling and publishing) except as used herein, is prohibited to the extent allowed by law.
- This guide and the screen images used throughout this guide are subject to change without notice.

Regulatory Information

- The marks are located on the rear side of the tool.
- The product meets the essential requirements of Regulation N.10 ECE.
- The product complies with Part 15 of the FCC Rules (47 CFR).
- The product is in conformity with FCC and ECE standards only if used with cables supplied and according to what specified in this user's guide.

Table of contents

Warning.....	2
Important Notices regarding the use of Powergate3	2
Important Notices regarding the contents of this guide	2
Regulatory Information.....	2
Precautions	4
Safety.....	4
Use and handling.....	4
LCD Screen	5
WEEE Directive.....	5
Cleaning.....	5
Checking the package contents	6
Part names and functions	7
Front side of the tool	7
Upper side of the tool	7
Basic Operation	8
Installing Alientech Slave Manager software	8
Main window of the software.....	8
Operating procedures	10
Displaying your devices.....	10
Creating the setup file for your Users.....	10
Customizing your Templates.....	12
Initializing a new User Device	15
Decoding/Encoding files received from your Users.....	16
Decoding a file	16
Encoding a file	16
Decoding your User’s LOG file	17
Downloading your LOG file	18
Displaying vehicles supported	19

Precautions

Before using this product, carefully read this manual and retain it for future reference.

Safety

This product has been designed with the highest concern for safety. However, any electrical device, if used improperly, has the potential for causing fire, electrical shock or personal injury. To help ensure accident-free operation, follow these guidelines:

- Observe all warnings, precautions and instructions.
- Stop use, unplug the USB cable from the PC and disconnect any other cables immediately if the device functions in an abnormal manner, produces unusual sounds or smells, or becomes too hot to touch.
- Never disassemble the product or accessories. Use the Powergate³ and accessories according to the instructions and guidelines provided in the user's guide. No authorization for the analysis or modification of the product, or the analysis or modification of the Alientech Slave Manager software, or the analysis of its circuit configuration, is provided. Disassembling will void the product warranty and may be dangerous

Use and handling

- Do not use the tool near water.
- Use only cables supplied by the Alientech S.r.l., its subsidiaries and affiliates or by an authorized dealer.
- Do not expose the tool or accessories to high temperatures, high humidity, or direct sunlight.
- Do not leave the product or accessories in a car with the windows closed (particularly in summer).
- Do not expose the product or accessories to dust, smoke, or steam.
- Do not allow liquid or small particles to get into the product or accessories.
- Do not place the product or accessories on surfaces that are tilted, unstable or subject to vibration.
- Do not drop or step on the product or accessories, and do not subject the device to strong physical shock.
- Do not put heavy objects on the product or accessories.
- Do not touch or insert foreign objects into the connectors of the tool or accessories.

LCD Screen

- The LCD screen is made of glass and may crack if subjected to excessive force.
- Pixels that are not lit or are continuously lit may appear in certain locations on the LCD screen. The possible occurrence of such spots is a normal occurrence associated with LCD screens and is not a sign of a malfunction.
- Direct exposure to sunlight may damage the product's LCD screen.
- When using the product in a cold environment, you may notice shadows on the graphics or the screen may appear darker than usual. This is not a malfunction, and the screen will return to normal when the temperature goes up.

WEEE Directive



This symbol on the product or its packaging indicates that this product shall not be treated as household waste. In line with EU Directive 2002/96/EC for waste electrical and electronic equipment (WEEE), this product must not be disposed of as unsorted municipal waste. Please dispose of this product by returning it to the point of sale or to your local municipal collection point for recycling

Cleaning

- **Cleaning the exterior surface excluding the LCD screen:** Wipe gently with a soft cloth. Do not use solvents or other chemicals to clear the exterior surface of the Powergate³.
- **Cleaning the LCD screen:** Wipe gently with a soft cloth.
- **Cleaning the connectors:** Do not use the product if the connectors are not clean. Remove the dirt with a dry cloth.

Checking the package contents

The basic kit supplied with Powergate³ includes:

- Powergate³ tool



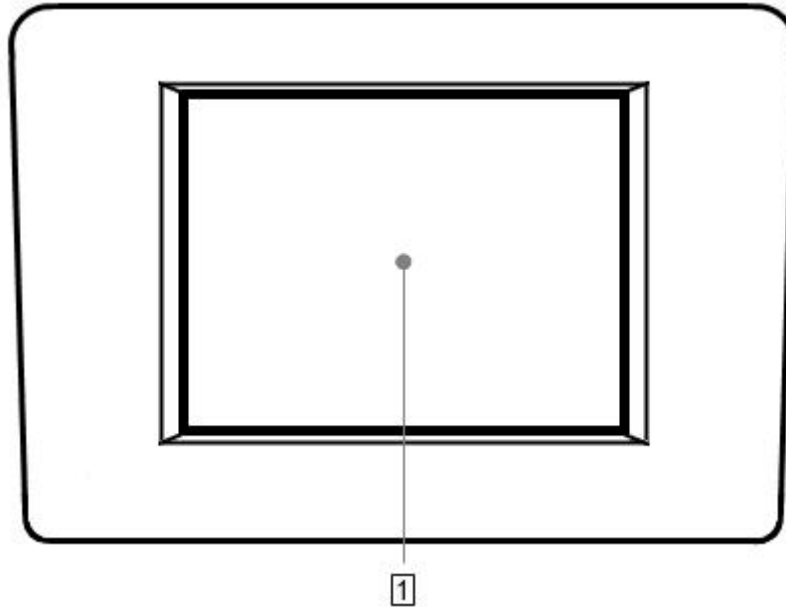
- 1 USB cable

If any items are missing, contact info@alientech.to providing your Customer Code.

Always keep the original packaging. In case of required servicing of the product, the tool must be returned with all accessories.

Part names and functions

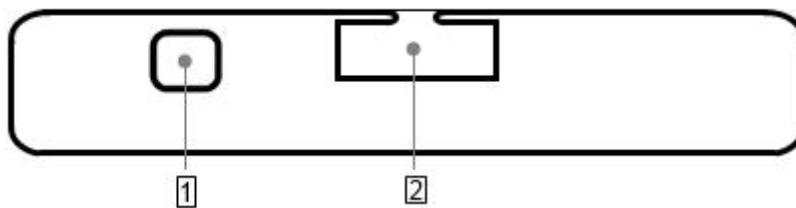
Front side of the tool



1 LCD Display

Touch screen display to use the software embedded in the tool.

Upper side of the tool



1 USB connector

Connect the tool to the computer.

2 Cable connector

Connect the cable supplied with the tool.

Basic Operation

Installing Alientech Slave Manager software

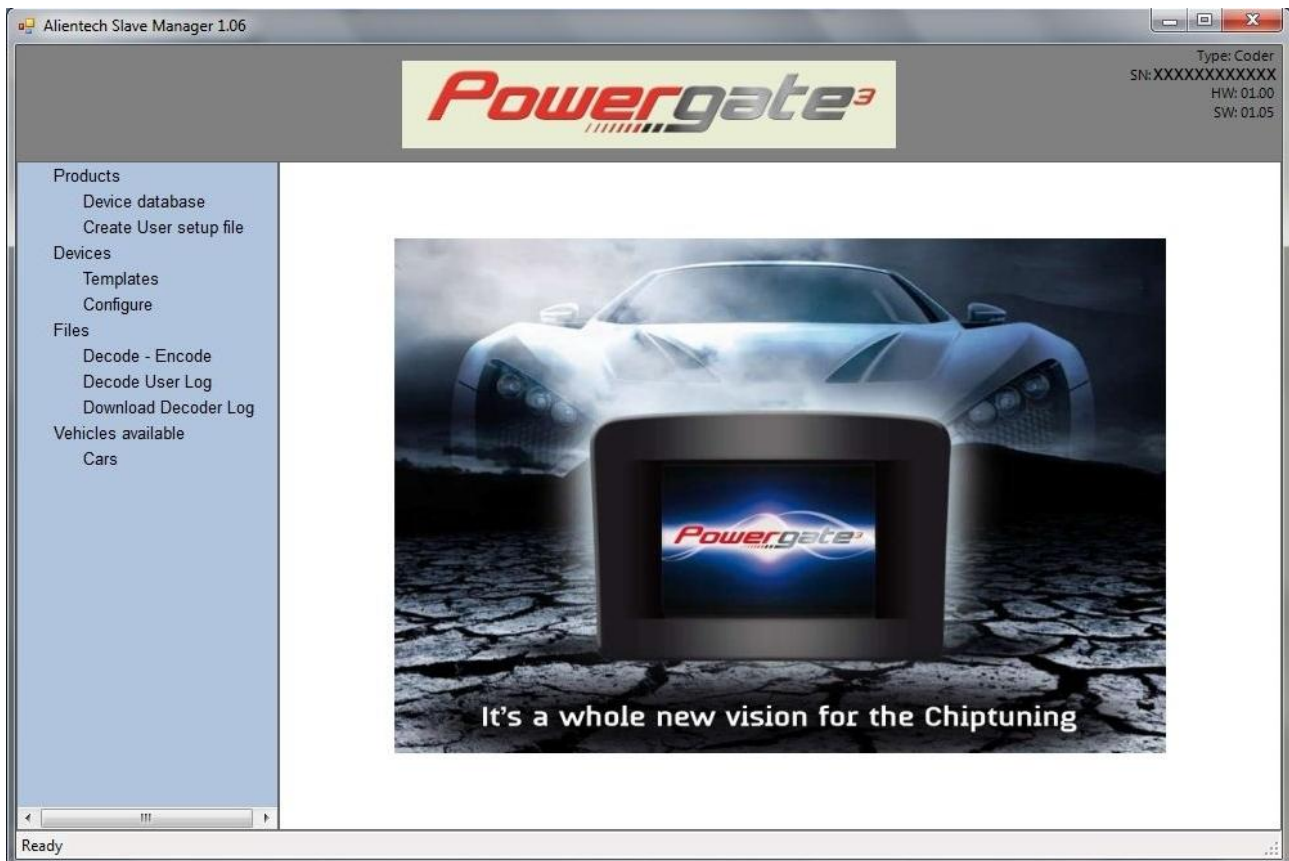
1. Download the Alientech Slave Manager software from the *Download* section of the website www.alientech.to and save the file SetupManager.exe in a folder of your computer.
2. Disable any anti-virus or anti-spam software that may prevent the installation of drivers.
3. Double click the file SetupManager.exe to open the wizard and install the Alientech Slave Manager software.

Notice: When the security warning saying it is not possible to verify the authenticity of the software or drivers is displayed, please click on Install.

4. Follow the on-screen instructions and wait for the installation to complete.
5. Connect the Powergate³ to your computer using the USB cable provided.

After the installation has completed, Alientech Slave Manager will start automatically.

Main window of the software



1 Products

Device database - To display a list with all the devices assigned to your Decoder profile. An active Internet connection is needed.

Create User setup file -To create the Setup file your customers will use to run the user-end software.

2 Devices

Templates - To enter the name of your User devices, create or upload already existing customized wallpapers and icons of the software embedded in your User devices, translate in your language the messages displayed on the touch screen of your User devices and preview them (as to check the length of messages on screen), enable the vehicles your User will program and add remarks to your template.

Configure - To initialize a new User device by assigning a specific template to a serial number.

3 Files

Decode - Encode - To manage files received from your Users.

Decode User Log - To decode the LOG files received from your Users.

Download Decoder Log - To save on your computer the LOG file of your Decoder device, so that you can send it to Alientech Technical Support Service.

4 Vehicles available

Cars - To display a complete list of all cars supported by Powergate³.

To make best use of Alientech Slave Manager, we suggest you to hit the maximize button in the titlebar.

Operating procedures

Displaying your devices

Click on **Device database** and then on **Continue** to display the list of all the devices you purchased, both the devices already assigned to a customer and those in your stock still to initialize.

You can filter the information as in Excel.

We remind you that an active Internet connection is needed to display the list.

Devices database				Remove all filters
Serial Number	Type	Vehicles	Creation date	
XXXXXXXXXXXX	Powergate User License	Car	29/01/2013 15.48	
XXXXXXXXXXXX	Powergate Coder License		29/01/2013 14.52	

You can sort the content of the table by Serial Number, Type, and Vehicles by clicking on the column-title box.

Creating the setup file for your Users

1. Click on **Create User setup file**.
2. Enter the name of your customized device in the Application Name field.
3. Enter the folder where to save the setup file in the Destination Folder field.
4. If you wish to give your software a different icon to display on the desktop of your User's computer, click on Change Icon and select folder and file.

The icon file must be in an .ico format, 48x48 px size suggested. You can change the size of the icon, but you have to keep it squared.

5. Click on Start to save the Setup File on your computer. A file named Setup[name entered in the Application Name field].exe will be saved so that you can send it to your customer by e-mail.

Powergate User Setup

Enter the App Name

Application Name

Enter the destination folder for powegate user files

Destination Folder

Change the Desktop Icon



Customizing your Templates

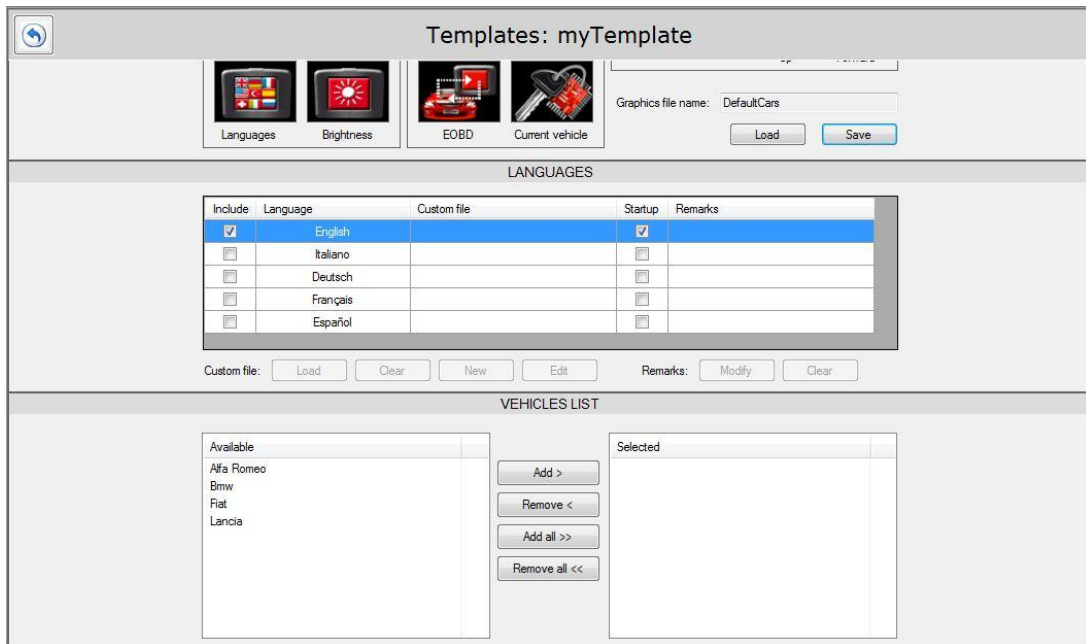
1. Click on **Templates**.



2. Click on New to create a new template.
3. Enter the name of your device. This name will appear in each message of the software embedded in the User device.
4. Click on each picture to upload the ones you want to be used on your User Devices. Size requirements are written above each set of picture. Only 24bit bitmap format supported.
5. Click on Save to enter a name for the new set of pictures and save it (we suggest you to keep the same name as the Setup file). If you've already created a set of pictures, click on Load to choose among the ones available.



6. Scroll down the screen to display other options to customize.



7. Select a language and then click on New to add your translation or check the message length. If you've already created a translation, click on Load to choose among the ones available.

On the left there is the reference string, on the right the one you can customize just by clicking on it.

For each message you can see a preview at your left (option not available for menu items or choice buttons).

'&' stands for the name of your device

'|' is a breaking space

Translations: English (USA)	
Device name: Powergate	Remarks: <input type="text"/>
<input type="button" value="Save & Assign"/>	
Reference	Custom
X	X
Message preview	Yes
Error	No
Protocol file corrupted, please update Powergate	Ok
	Backlight setting
	Error
	Warning
	Protocol file not found
Protocol file corrupted, please update &	Protocol file corrupted, please update &
An error occured while reading data from Ecu, Please try again.	An error occured while reading data from Ecu, Please try again.
ECU number mismatch Ecu write denied	ECU number mismatch Ecu write denied
Tuning file corrupted.	Tuning file corrupted.
Close file please wait...	Close file please wait...
Impossible to find message number	Impossible to find message number
& out of sync ecu write denied	& out of sync ecu write denied
Configuration missing or corrupted, Please update &	Configuration missing or corrupted, Please update &
Vehicle list not present, Please update &	Vehicle list not present, Please update &
An error occured while writing Ecu, Please try again.	An error occured while writing Ecu, Please try again.
Ecu communication error.	Ecu communication error.
Language file missing, Please update &	Language file missing, Please update &
Tuning file mismatch, Ecu write denied	Tuning file mismatch, Ecu write denied
& corrupted.	& corrupted.
Tuning file empty, Ecu write denied	Tuning file empty, Ecu write denied

- Once you're done, click on Save&Assign to enter a name for the translation and then hit the arrow at the top left to go back to the myTemplate page.

LANGUAGES				
Include	Language	Custom file	Startup	Remarks
<input checked="" type="checkbox"/>	English	British English	<input checked="" type="checkbox"/>	
<input type="checkbox"/>	Italiano		<input type="checkbox"/>	
<input type="checkbox"/>	Deutsch		<input type="checkbox"/>	
<input type="checkbox"/>	Français		<input type="checkbox"/>	
<input type="checkbox"/>	Español		<input type="checkbox"/>	

Custom file:

Remarks:

Now you can add a remark to your translations by clicking on Modify.

- Select one or more brand of vehicles to assign to your User Device.
Your User will see only the vehicles of the brand assigned, even if new brands will be added to the list of vehicles available.

- Add a remark for the template you are creating. We suggest you to add a detailed description of the template.
- Click on Save to save the new template.

The name of the new template, together with all other information regarding this template, will appear in the User Profile page.

Initializing a new User Device

1. Click on Configure.
2. Wait until in the box at the bottom left is displayed the number of Licenses available to configure User devices.
3. Click on Continue.
4. Connect a new device to your computer (the Decoder device must still be connected).
5. Wait until the new device is recognized by your computer.
6. Select a template.
7. Click on Start to begin the initialization of the new device.
8. Wait until the initialization is completed and then unplug the User device from your computer.

Device configuration

1. Link with USER device

Connect the USER device to configure


SN

Status

Type

Vehicles

2. Template selection

Template	Graphics	Languages	Vehicles
Name: Default Template Device: Powergate Type: U Group: CAR		English Italiano	Fiat


3. Start process

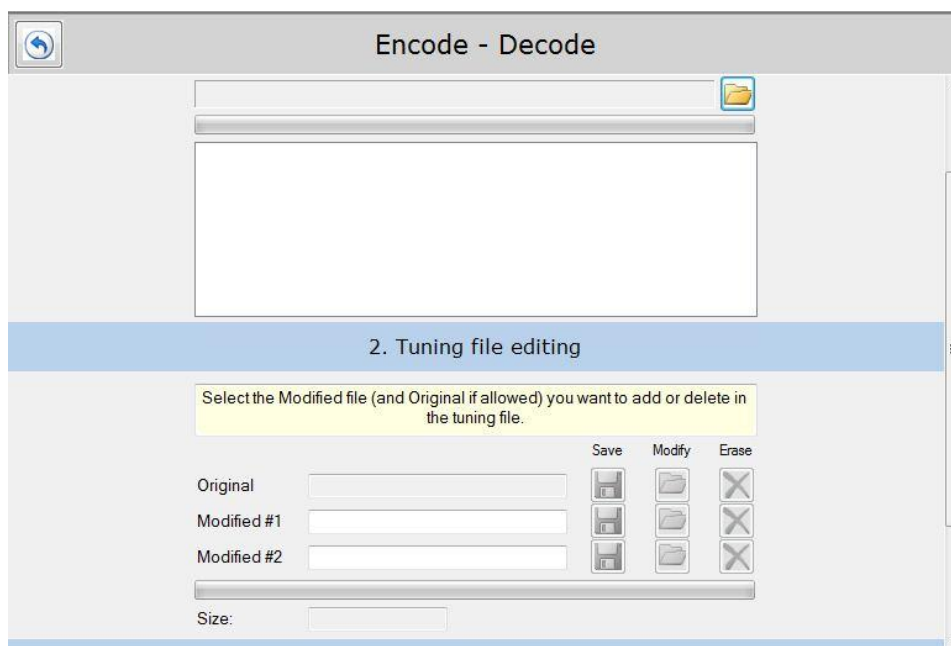
Connect the device and press START to initialize it

We remind you that an active Internet connection is needed to initialize devices.




Decoding/Encoding files received from your Users

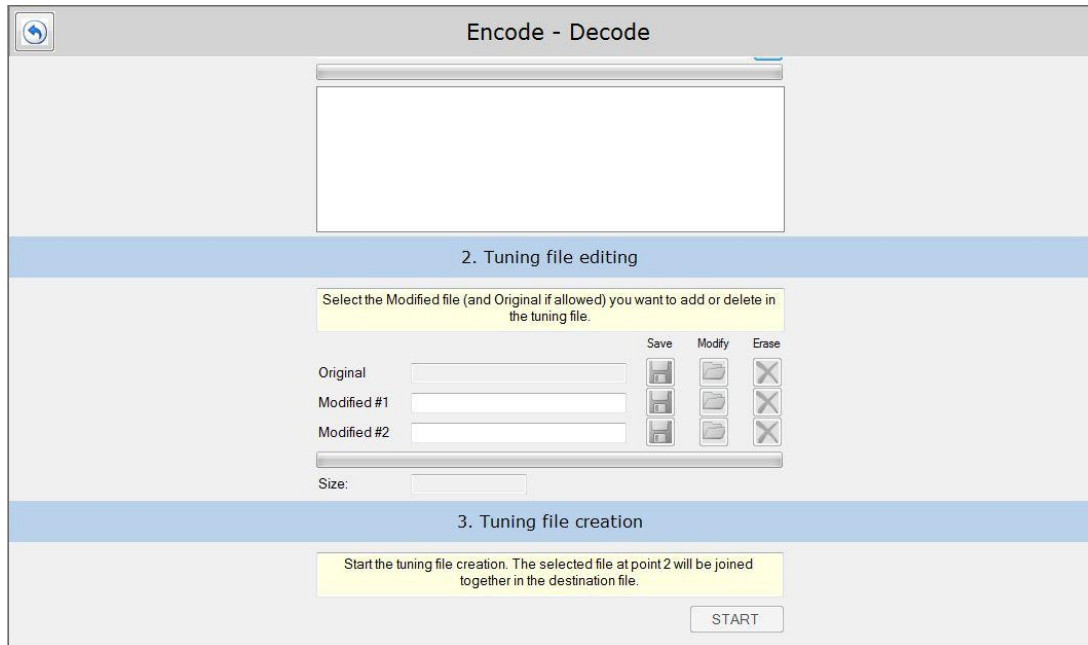
Decoding a file

1. Click on Decode - Encode.
2. Click on Continue.
3. Select the folder where you saved the encoded file received from your User by clicking the icon .
4. Save the original file in a folder of your computer so that you can edit it using a chiptuning software.



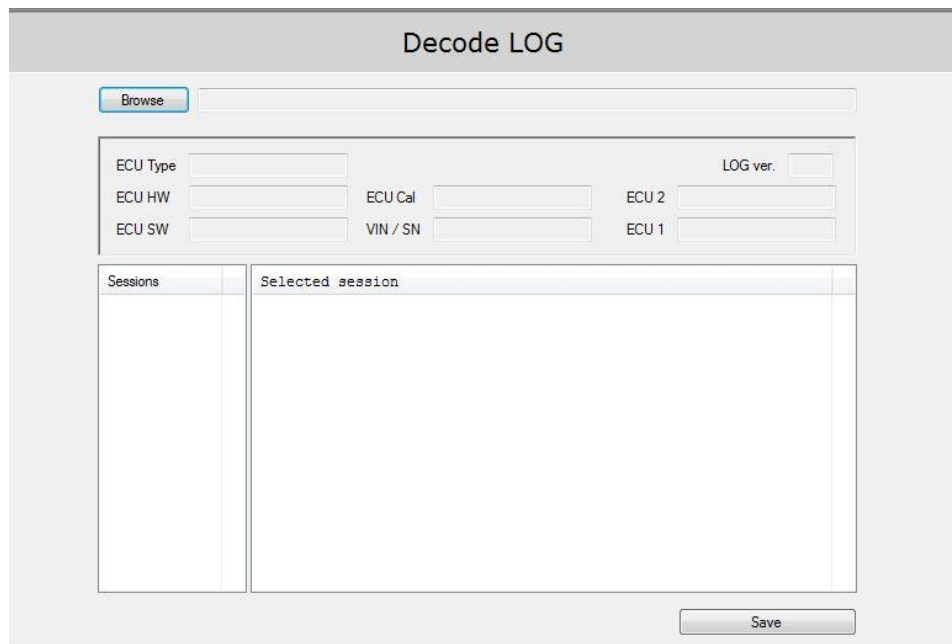
Encoding a file

1. Click on Decode - Encode.
2. Click on Continue.
3. Browse the folder where you saved the original file received from your User by clicking the icon  and select the original file.
4. Select up to two modified files by clicking on the icon  in the Modify column. If case you want to remove a modified file already associated to that original, just click the icon .
5. Click on start to create the encoded file to send your customer.



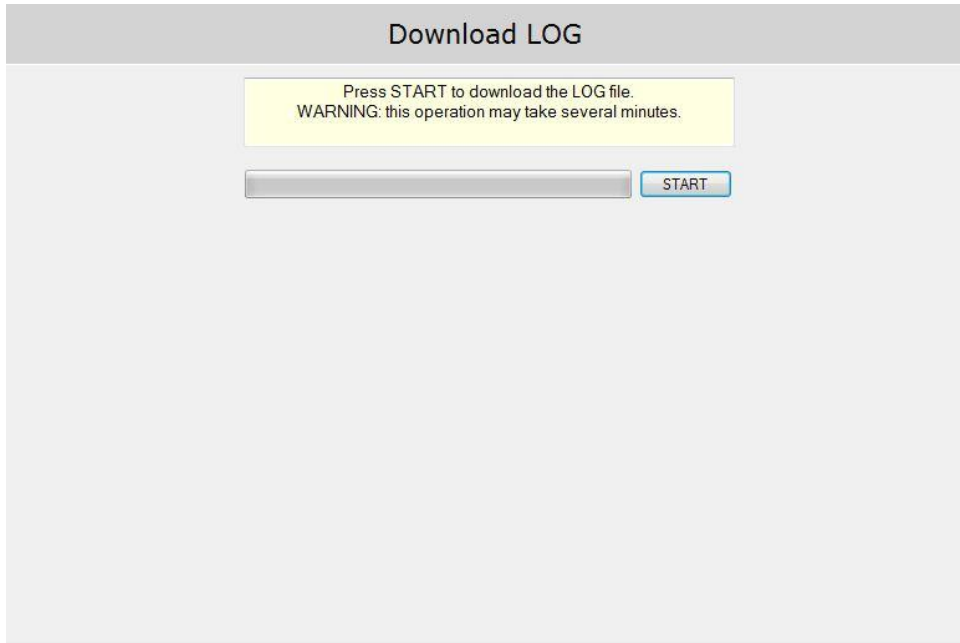
Decoding your User's LOG file

1. Click on Decode User LOG.
2. Click on Browse to select the LOG file received from your customer.
3. In Session box, chose the session that gave your customer issues.
4. In the Selected section box, you can see all the operations done by the device.



Downloading your LOG file

1. Click on Download Decoder LOG.
2. Click on Start to save the LOG file of your Decoder device on your computer.



Displaying vehicles supported

Click on Cars to display the list of all cars supported by Powergate³.

You can filter the information as in Excel.

We remind you that an active Internet connection is needed to display the list.

Cars											Remove all filters
Manufact	Model	Version	Engine	Ty	Fuel	HI	ECU Man.	ECU Type	Pi		
Alfa Romeo	Mito		1300 JTD 1...		Diesel	90	MARELLI	MJD6F3		19	
Alfa Romeo	Mito		1300 JTD 1...		Diesel	95	MARELLI	MJ8DF		21	
Bmw	1 Series	(E81)	118d 2000 D	N47...	Diesel	143	BOSCH	EDC17 C06		32	
Bmw	1 Series	(E81)	120d 2000 D	N47...	Diesel	177	BOSCH	EDC17 CP02		32	
Bmw	1 Series	(E81)	123d 2000 D	N47...	Diesel	204	BOSCH	EDC17 CP02		32	
Bmw	1 Series	(E81)	130i 3000 24v	N52...	Petrol	265	SIEMENS	MSV70		36	
Bmw	1 Series	(E81)	116d 2000 D	N47...	Diesel	115	BOSCH	EDC17 C06		32	
Bmw	1 Series	(E82)	118d 2000 D	N47...	Diesel	143	BOSCH	EDC17 C06		32	
Bmw	1 Series	(E82)	120d 2000 D	N47...	Diesel	177	BOSCH	EDC17 CP02		32	
Bmw	1 Series	(E82)	123d 2000 D	N47...	Diesel	204	BOSCH	EDC17 CP02		32	
Bmw	1 Series	(E82)	125i 3000 24v	N52...	Petrol	218	BOSCH	MEV1746		30	
Bmw	1 Series	(E82)	128i 3000 24v	N52...	Petrol	230	BOSCH	MEV1746		30	
Bmw	1 Series	(E87)	118i 2000 16v	N46...	Petrol	129	BOSCH	MEV946		29	
Bmw	1 Series	(E87)	120i 2000 16v	N46...	Petrol	150	BOSCH	MEV946		29	
Bmw	1 Series	(E87)	118d 2000 D	N47	Diesel	122	BOSCH	EDC16 C36		26	

You can sort the content of the table by clicking on the column-title box.